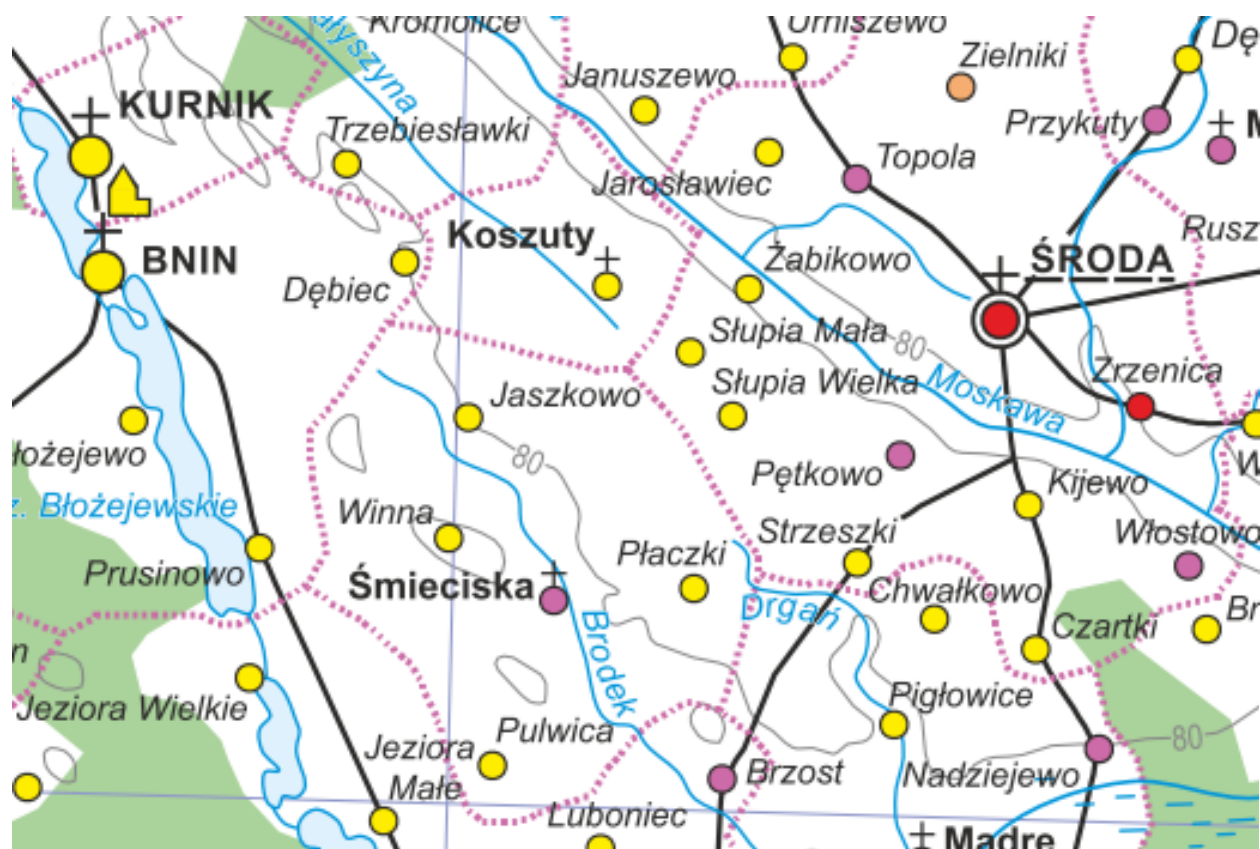


Historical Atlas of Poland 2.0

over 140 years of joint work of historians and cartographers



Katarzyna Słomska-Przech @KatSłomska,
Dawid Maciuszek, Aniela Rząsa, Tomasz Panecki
Tadeusz Manteuffel Institute of History,
Polish Academy of Sciences
<http://atlasfontium.pl/>
ksłomska@ihpan.edu.pl

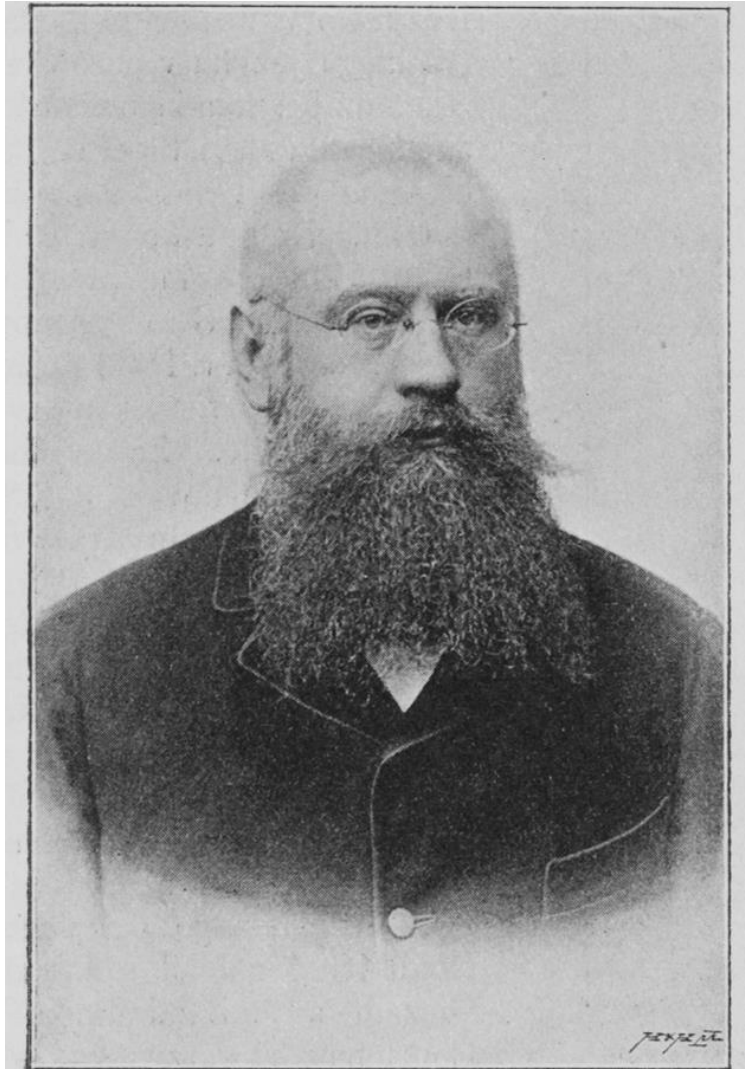


Ministerstwo
Edukacji i Nauki



NARODOWY PROGRAM
ROZWOJU HUMANISTYKI

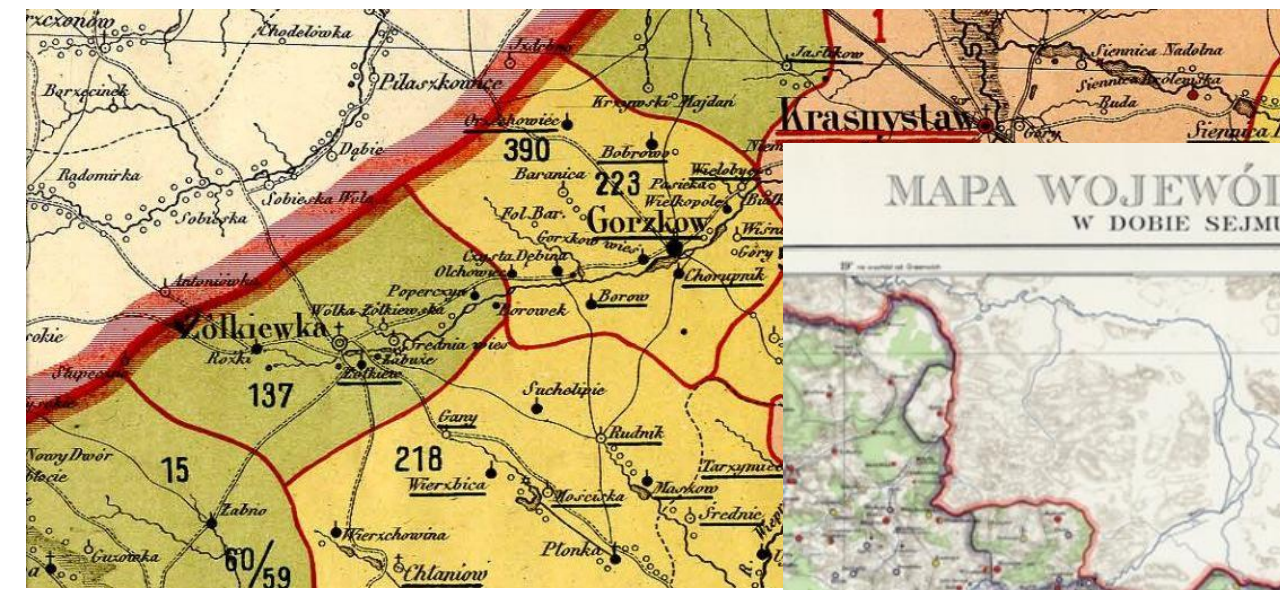
Beginnings



Dr. STANISŁAW SMOLKA,

- 1880 – 1st General Congress of Polish Historians
- an urgent need to develop historical maps for different periods
- maps content: settlement network, secular and church boundaries
- ‘base’ maps (*Grundkarteforschung*) as a basis for researchers

Historical Atlas of Poland: 1880 -> 1966



1904



1930



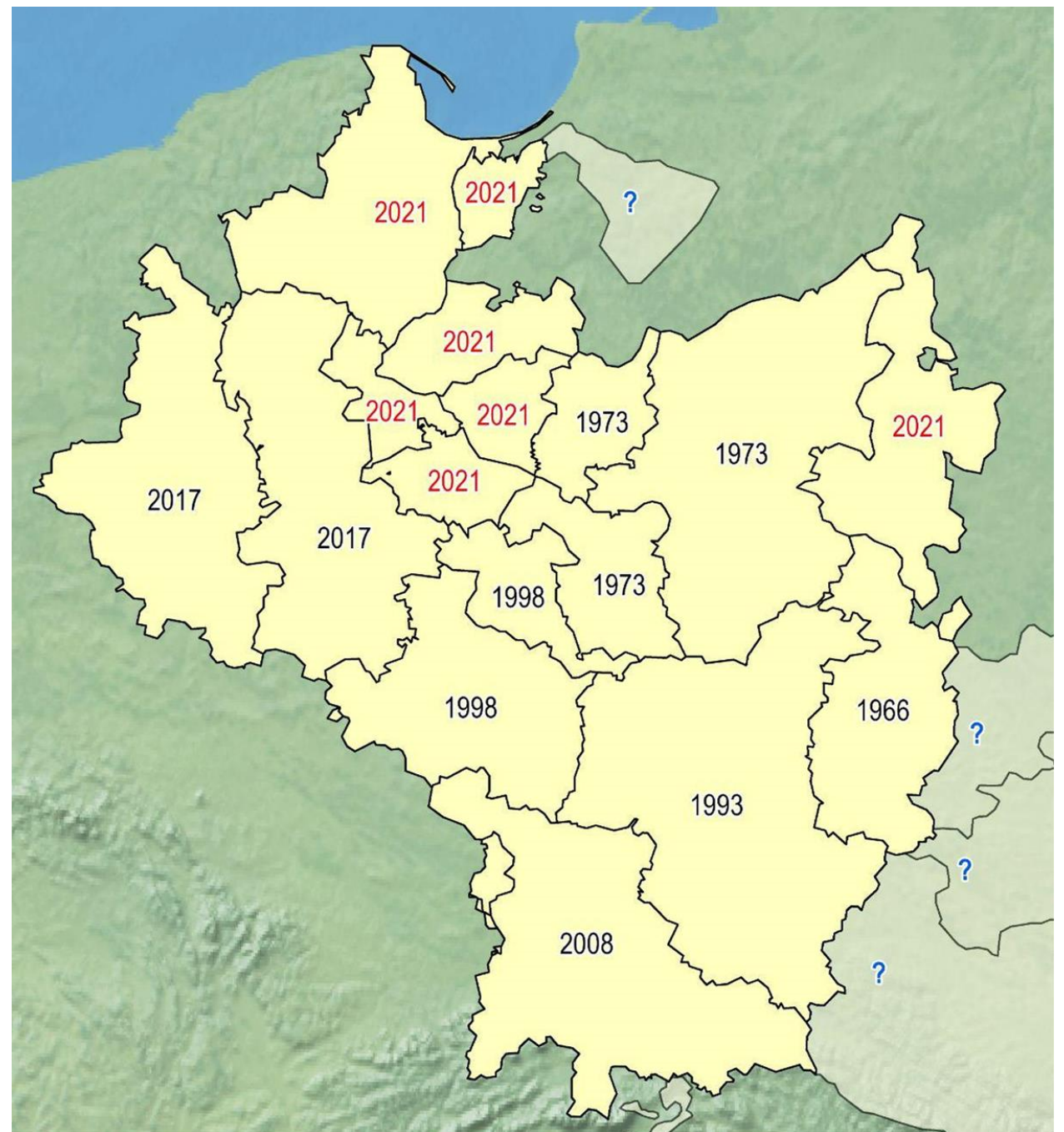
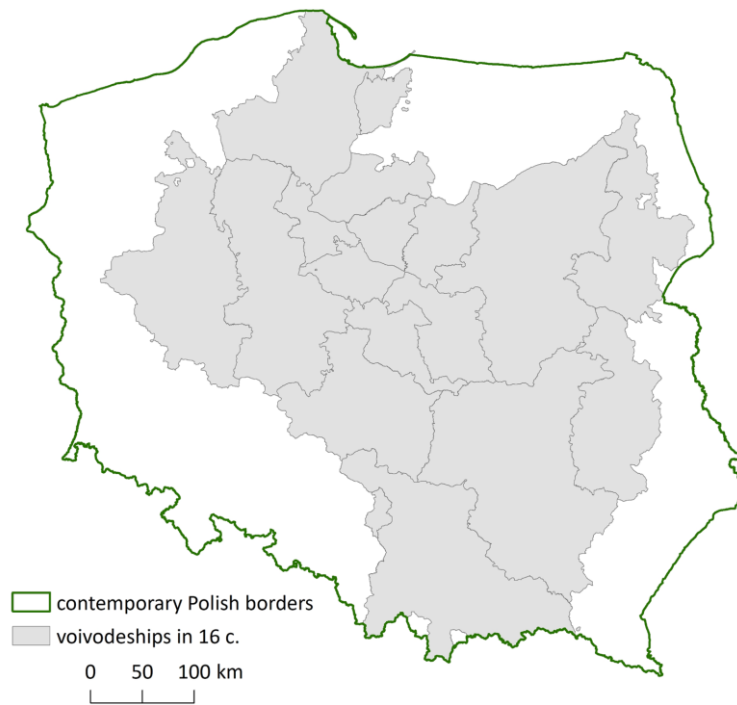
1958

1966 -> 2018 -> 2021 -> ?

1966-2017 Lesser Poland, Greater Poland, Mazovia

2021 Cuyavia, Podlasie, Royal Prussia (supplement)

? Warmia, Ruś



Historical Atlas of Poland in 16th c.

Each volume consists of:

- main map 1:250,000,
- thematic maps 1:500,000: Church administration borders, communes of other denominations, ownership affiliation of settlements, network of main and secondary roads,
- town plans 1:10,000,
- commentary with list of settlements and elements of natural landscape.

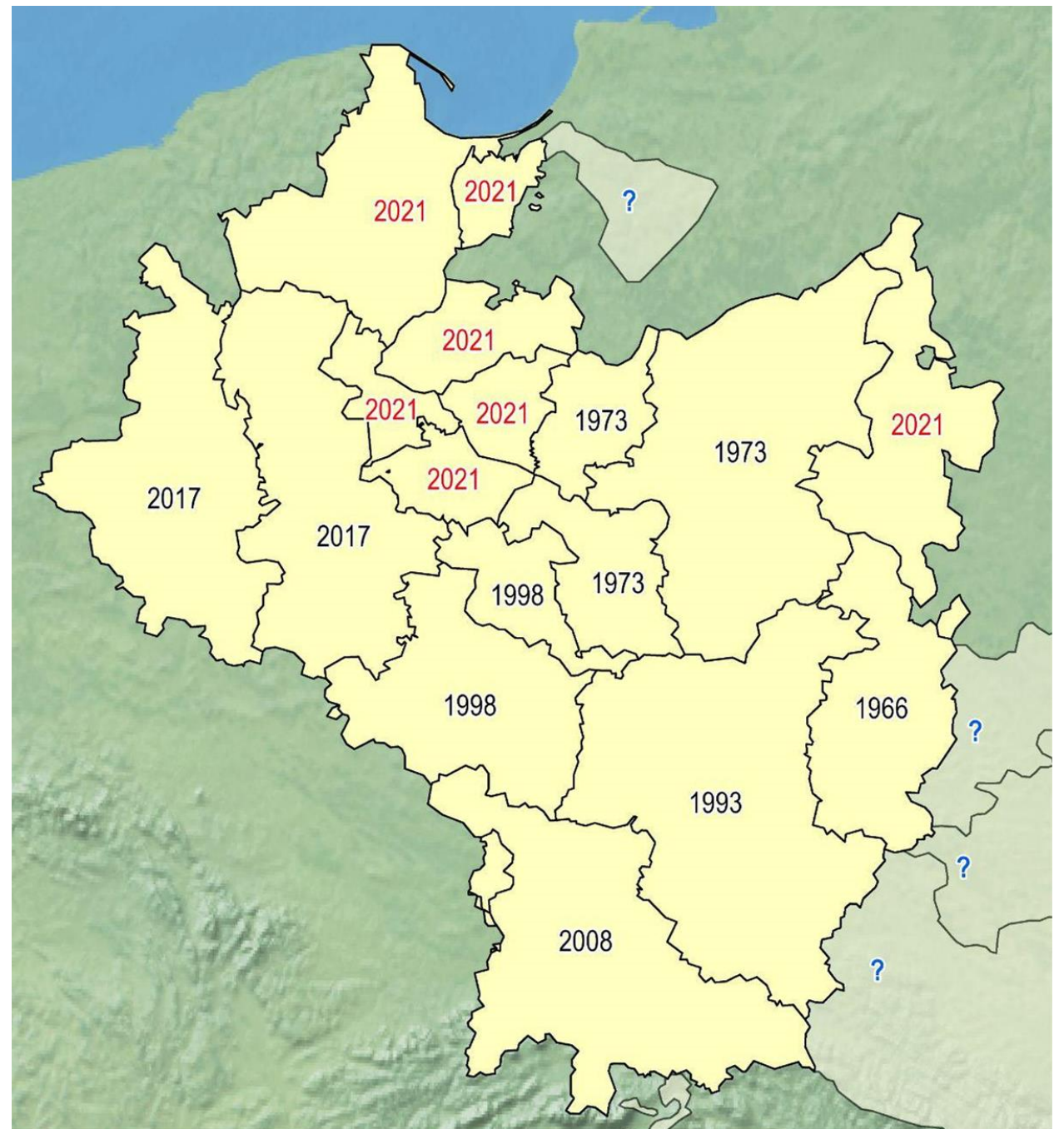
1966 -> 2018 -> **2020** -> 2021 -> ?

1966-2017 Lesser Poland, Greater Poland, Mazovia

2020 the beginning of the AHP 2.0 project

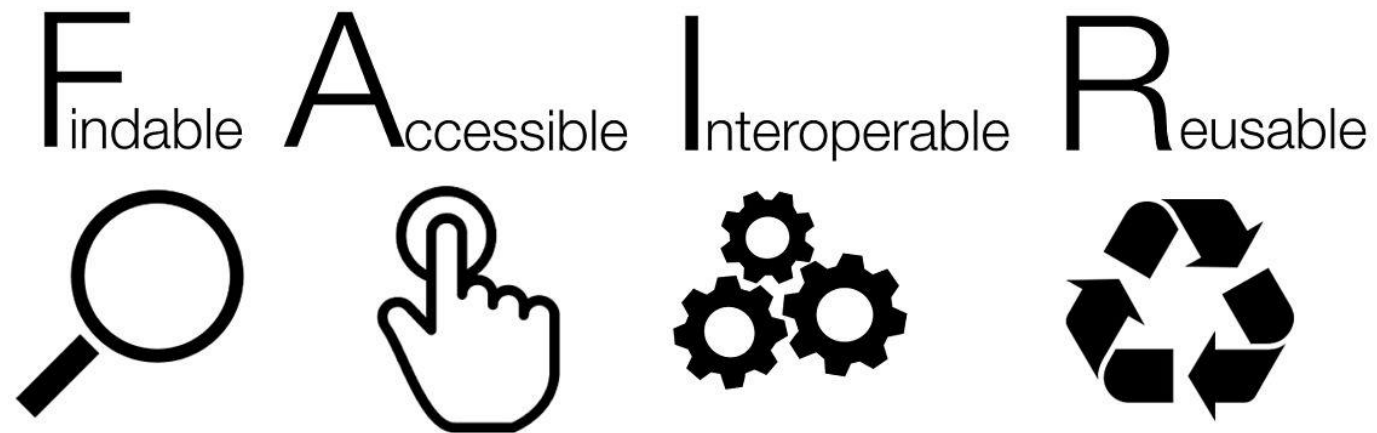
2021 Cuyavia, Podlasie, Royal Prussia (supplement)

? Warmia, Ruś



Historical Atlas of Poland 2.0

- more accessible, structured, consistent and stable repository of historical geodata based on [GeoNode](#)
- presentation of data and active work with data
- preparation of data for the official state repository



by Sangya Pundir, CC



Historical Atlas of Poland: 1880 -> 2021



paper map

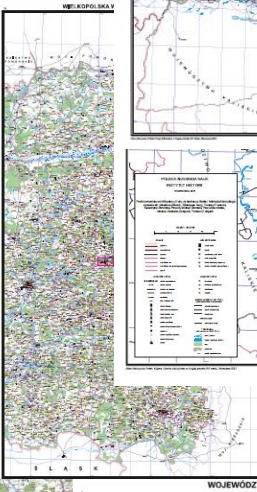
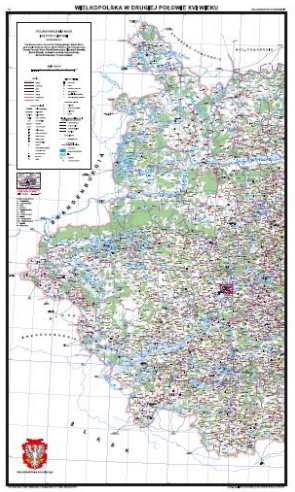
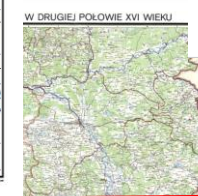
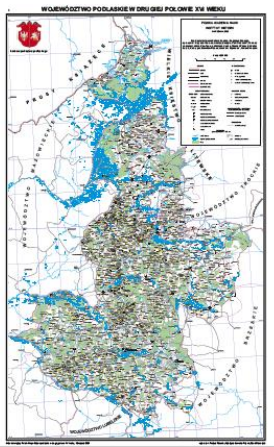
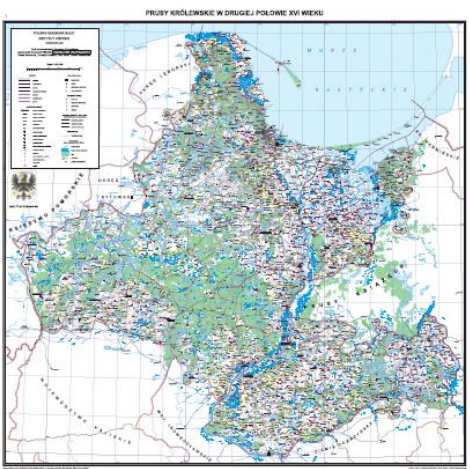


digital map

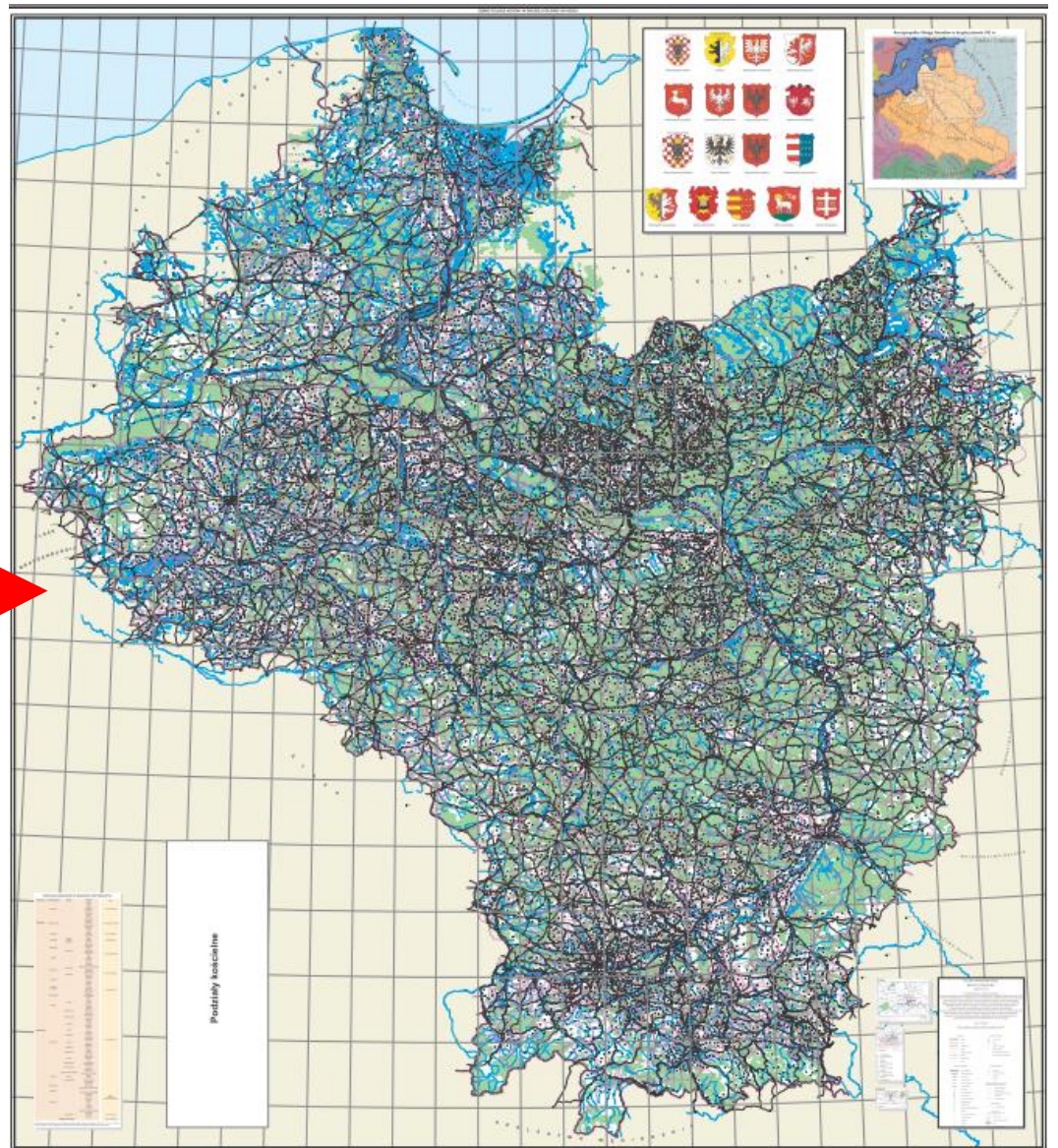


database





WIEKU



AtlasFontium.pl

Atlas Fontium

About the site

Atlas of Sources and Materials

Studia Geohistorica

Materials

English



Data



Search settlements



Applications

AtlasFontium.pl

Atlas Fontium

About the site

Atlas of Sources and Materials

Studia Geohistorica

Materials

English



THE MAP OF POLISH LANDS OF THE CROWN IN THE 16TH CENTURY – A SPATIAL DATABASE



The map of Polish lands of the Crown in the 16th century – a spatial database

The Tadeusz Manteuffel Institute of History of the Polish Academy of Sciences

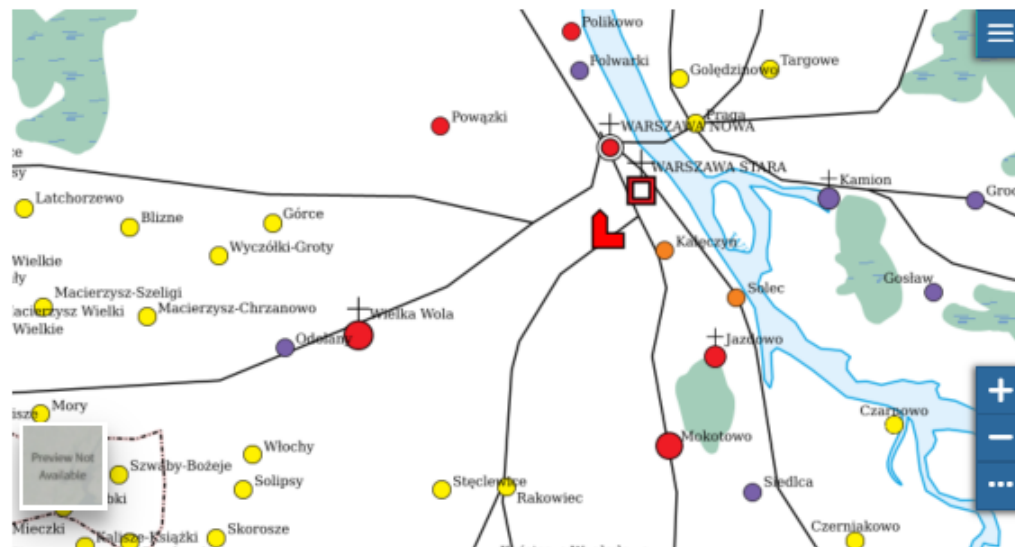
State of work: finished (with possibilities of further development) Update date: 13.12.2021

THE MAP OF
POLISH LANDS
OF THE
CROWN IN THE
16TH
CENTURY – A
SPATIAL
DATABASE

Search

The data presented here are the result of work on the series: *Historical Atlas of Poland. Detailed Maps of the 16th Century*, which was completed in 2021¹, and are made available in several forms. Firstly, through a [Web-GIS application](#) that allows viewing these data in the form of a digital map, on which – as far as technically possible – the symbolisation from the paper Atlas maps has been reproduced. Secondly, in the form of downloadable layers from the [data repository](#)

Ziemie polskie Korony w drugiej połowie XVI w.



Info



Share



Ratings



Comments

Title Ziemie polskie Korony w drugiej połowie XVI w.
License Attribution-NoDerivatives 4.0 International (CC BY-ND 4.0) ⓘ
Abstract Mapa na podstawie Atlasu Historycznego Polski.
Publication Date Nov. 15, 2021, 5:11 p.m.
Keywords

- Atlas historyczny Polski

Category Location ⓘ
Regions Global
Responsible atlas_ihpan
Attribution AHP 2.0, IH PAN

More info -

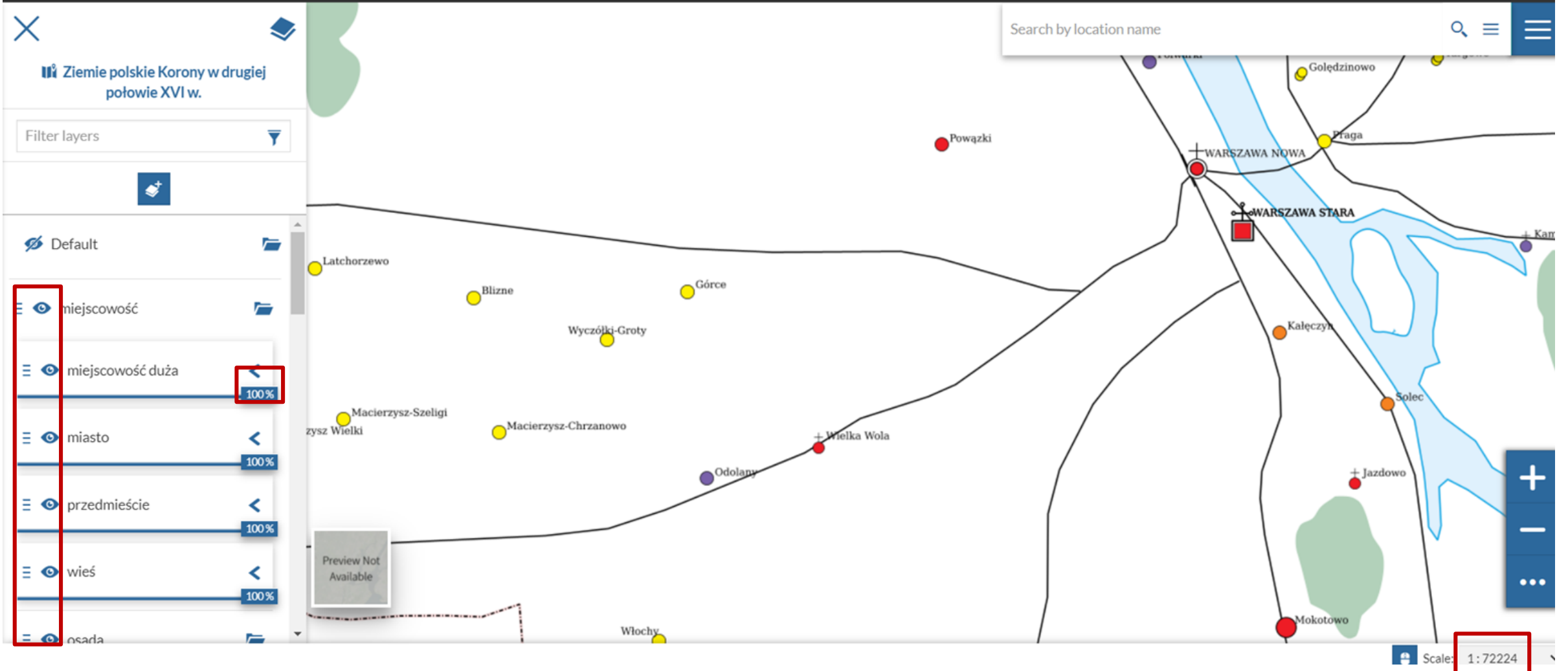
Map layers WMS GetCapabilities document

[Download Map](#)
[Metadata Detail](#)
[View Map](#)

Map Layers

This map uses the following layers:

- › Lasy [Atlas historyczny Polski XVI w.]
- › Bagna [Atlas historyczny Polski XVI w.]
- › Rzeki [Atlas historyczny Polski XVI w.]
- › Akweny [Atlas historyczny Polski XVI w.]
- › Drogi [Atlas historyczny Polski XVI w.]
- › Powiaty [Atlas historyczny Polski XVI w.]
- › Województwa [Atlas historyczny Polski XVI w.]
- › Parafie [Atlas historyczny Polski XVI w.]
- › Diecezje [Atlas historyczny Polski XVI w.]
- › Archidiakonaty [Atlas historyczny Polski XVI w.]
- › Opactwa [Atlas historyczny Polski XVI w.]
- › Huty szkła [Atlas historyczny Polski XVI w.]
- › Kopalnie [Atlas historyczny Polski XVI w.]
- › Osady folwarczne [Atlas historyczny Polski XVI w.]
- › Osady smolne [Atlas historyczny Polski XVI w.]
- › Osady kuźnicze i młyńskie [Atlas historyczny Polski XVI w.]
- › Osady karczemne [Atlas historyczny Polski XVI w.]
- › Wsie [Atlas historyczny Polski XVI w.]
- › Pustki parafialne [Atlas historyczny Polski XVI w.]



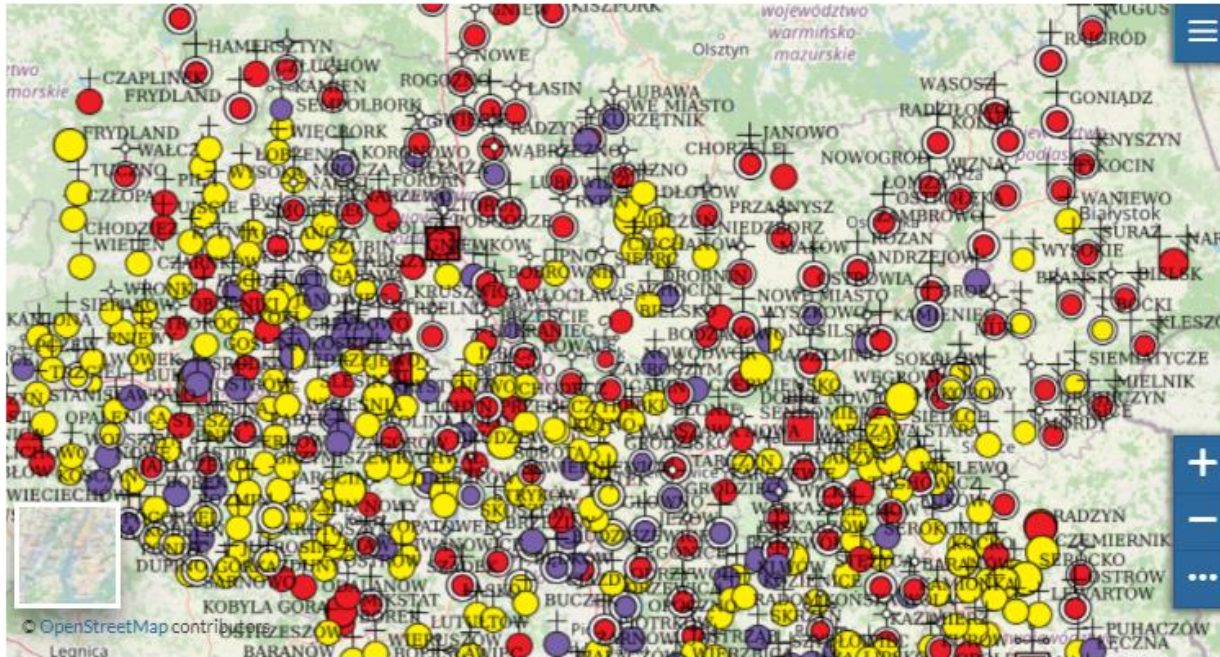
Historical Atlas of Poland in GeoNode (beta)

The screenshot shows the GeoNode website interface. At the top, there is a navigation bar with the GeoNode logo and menu items: Data, Maps, Apps, and About. To the right, there are search boxes for 'GeoNode Resource Search' and 'AHP Settlement Search', and a user profile for 'Katarzyna Słomska'. Below the navigation bar, the main heading is 'Search for Data.' followed by a large search input field and a link to 'Advanced Search'. The main content area is divided into four sections, each with an icon, a title, a description, and a button:

- 12 Layers**: Represented by a diamond icon. Description: 'Click to search for geospatial data published by other users, organizations and public sources. Download data in standard formats.' Button: 'Add layers »'
- 2 Maps**: Represented by a location pin icon. Description: 'Data is available for browsing, aggregating and styling to generate maps which can be saved, downloaded, shared publicly or restricted to specify users only.' Button: 'Create maps »'
- 28 Documents**: Represented by a document icon. Description: 'As for the layers and maps GeoNode allows to publish tabular and text data, manage their metadata and associated documents.' Button: 'Add documents »'
- 14 Users**: Represented by a person icon. Description: 'Geonode allows registered users to easily upload geospatial data and various documents in several formats.' Button: 'See users »'

<https://data.atlasfontium.pl/>

Miasta [Atlas historyczny Polski XVI w.]



Info Attributes Share Ratings Comments

Title Miasta [Atlas historyczny Polski XVI w.]
Abstract Miasta z "Atlasu historycznego Polski. Mapy szczegółowe XVI w."
Publication Date Nov. 17, 2021, 6:51 a.m.
Type Vector Data
Keywords

- charakter_miasto
- features

Category Location ⓘ
Regions Global
Responsible arzasa

<https://data.atlasfontium.pl/>

Download Layer

Metadata Detail

View Layer

Download Metadata

Legend

charakter_miasto

- ✚ miasto_d_null_dekanat_pewne
- ✚ miasto_d_null_diecezja_pewne
- ✚ miasto_d_small_parafia_pewna
- ✚ miasto_d_null_parafia_pewna
- ✚ misto_d_null_archidiakonat_pewna
- ✚ miasto_d_small_archidiakonat_pewna
- ✚ miasto_d_small_dekanat_pewna
- ✚ miasto_d_small_null_pewna
- ✚ miasto_ds_small_null_pewna
- ✚ miasto_ds_small_parafia_pewna
- ✚ miasto_k_null_parafia_pewna
- ✚ miasto_k_null_dekanat_pewna
- ✚ miasto_k_big_dekanat_pewna
- ✚ miasto_k_big_parafia_pewna
- ✚ miasto_k_small_parafia_pewna
- ✚ miasto_k_null_archidiakonat_pewna
- ✚ miasto_k_null_null_pewna
- ✚ miasto_k_small_dekanat_pewna
- ✚ miasto_k_small_null_pewna
- ✚ miasto_k_null_diecezja_pewna
- ✚ miasto_k_big_archidiakonat_pewna
- ✚ miasto_k_big_diecezja_pewna
- ✚ miasto_k_small_parafia_2

Metadata : Miasta [Atlas historyczny Polski XVI w.]

[Return to Layer](#)

Identification

Title Miasta [Atlas historyczny Polski XVI w.]
Abstract Miasta z "Atlasu historycznego Polski. Mapy szczegółowe XVI w.".

Publication Date Nov. 17, 2021, 6:51 a.m.

Type Vector Data

Keywords

- [charakter_miasto](#)
- [features](#)

Category [Location](#) ⓘ

Regions Global

Approved Yes

Published Yes

Featured No

DOI None

Attribution None

Responsible

Name Aniela Rząsa (a.rzasa)

email aniela.rzasa@gmail.com

Position None

Organization None

Location

Voice None

Fax None

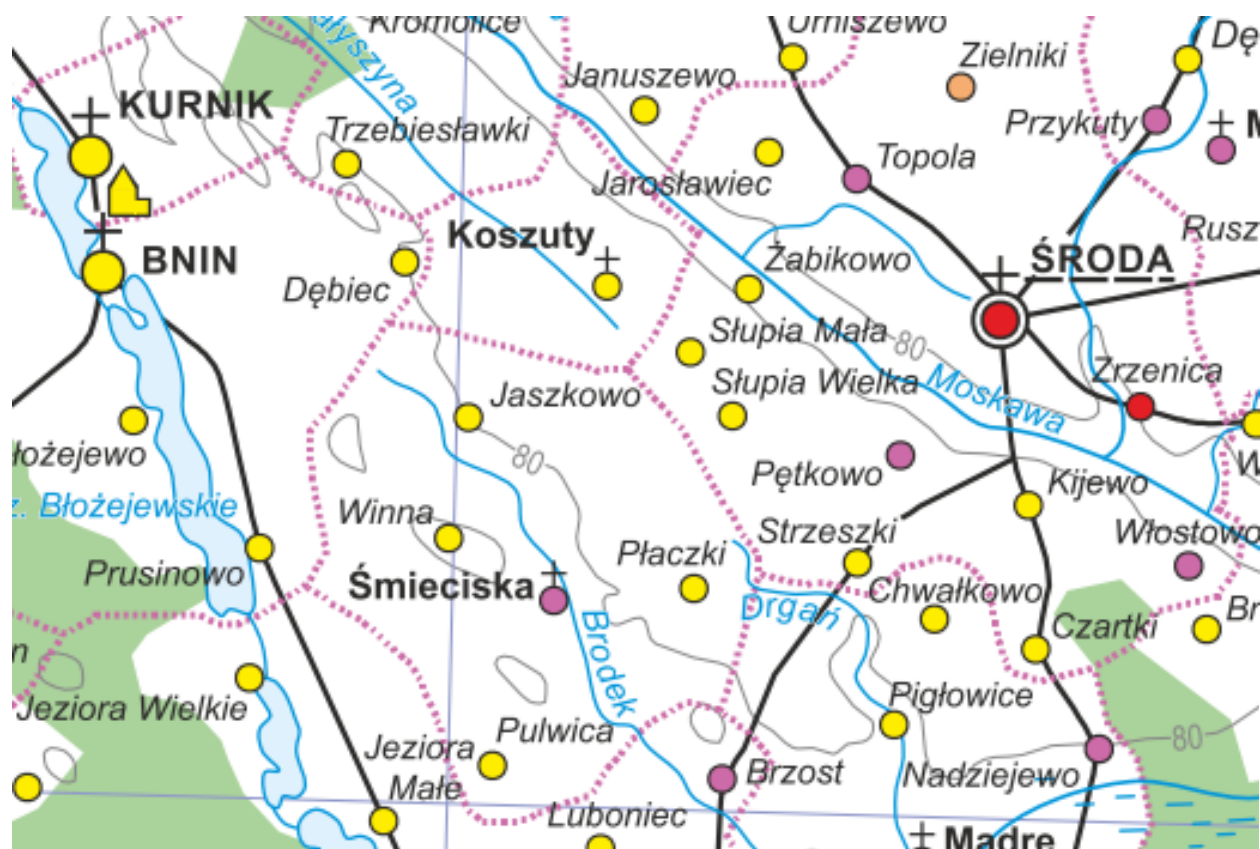
Keywords Idap

Information

<https://data.atlasfontium.pl/>

Historical Atlas of Poland 2.0

over 140 years of joint work of historians and cartographers



Katarzyna Słomska-Przech @KatSłomska,
Dawid Maciuszek, Aniela Rząsa, Tomasz Panecki
Tadeusz Manteuffel Institute of History,
Polish Academy of Sciences
<http://atlasfontium.pl/>
ksłomska@ihpan.edu.pl



Ministerstwo
Edukacji i Nauki



NARODOWY PROGRAM
ROZWOJU HUMANISTYKI